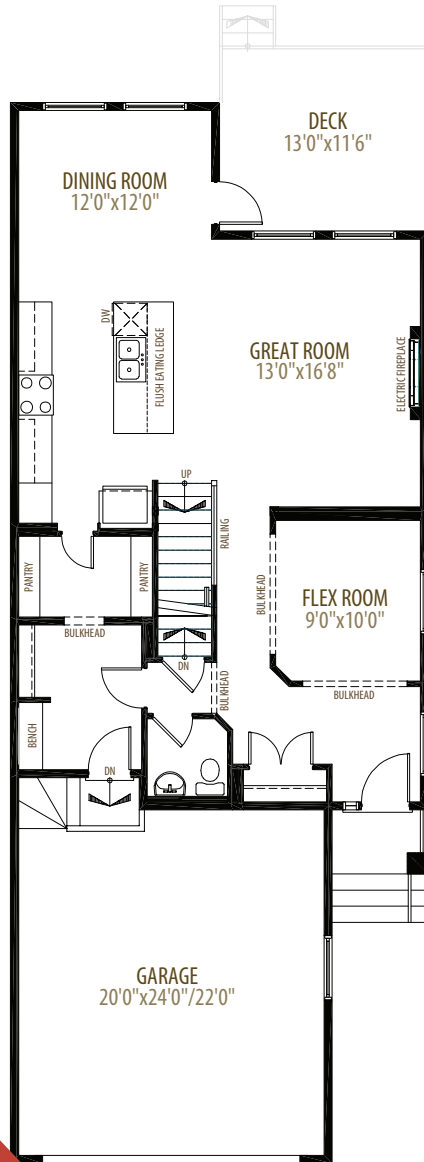


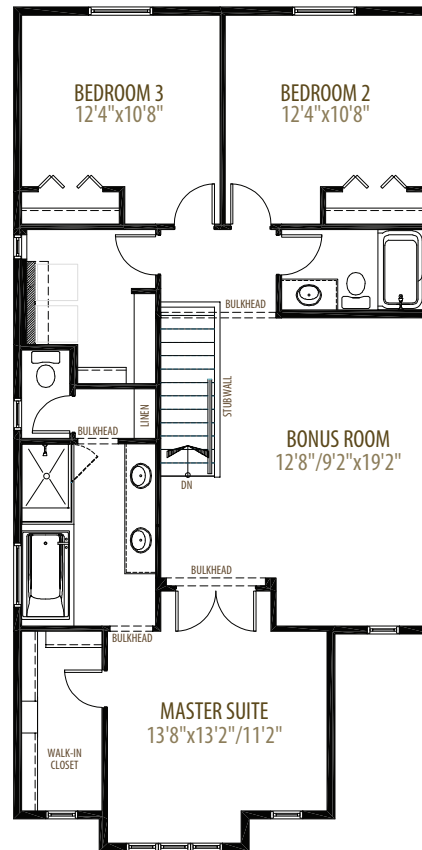
# THE EMMETT

2,287 SQ FT | 3 BEDROOM 2.5 BATH

OPTION #3 - EXTENDED KITCHEN & OPTION #8 - REVERSE UPPER FLOOR



**Main Floor** 1,024 sq ft



**Upper Floor** 1,263 sq ft

**NOW AVAILABLE**  
**\$762,418.29**



Proud to be named Calgary's Builder of the Year for 15 years.  
2001, 2002, 2003, 2004, 2005, 2006, 2007, 2008, 2009, 2010, 2013, 2014, 2018, 2020, 2021



# 101 CREEKSIDE WAY SW

**POSSESSION: OCTOBER 2022**



## MODEL HOME FEATURES INCLUDE:



- Gourmet kitchen - with quartz island waterfall
- Spa package - includes 10mil glass front door and side panel between shower/soaker tub
- Deck with aluminum railing
- Gas line to deck
- Upgraded flooring
- Hardware in home finished in matte black
- South facing backyard

## CONTACT

**AREA MANAGER**

Krista Warnes  
587 333 2231

[sirocco@morrisonhomes.ca](mailto:sirocco@morrisonhomes.ca)

*Sirocco*  
AT PINE CREEK

Price subject to change. Elevation and colours may not be as shown.  
Please see Area Manager for details.

**MorrisonHomes.ca**