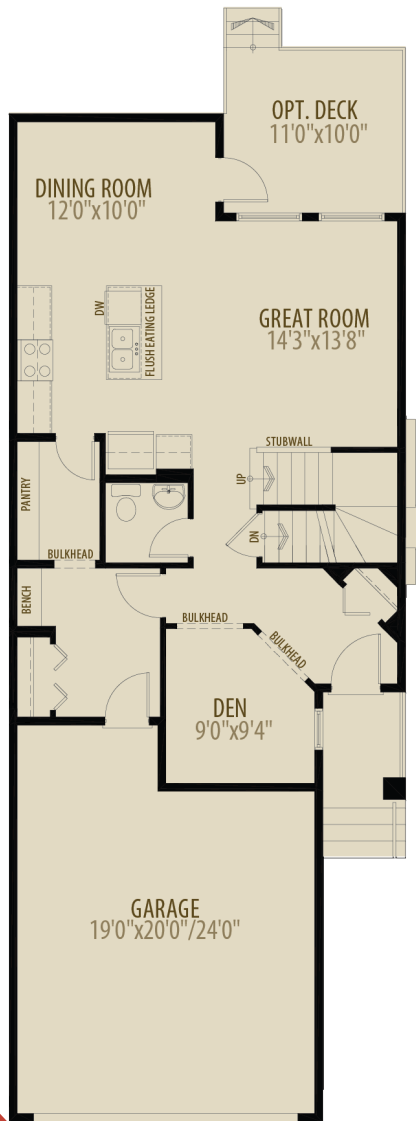


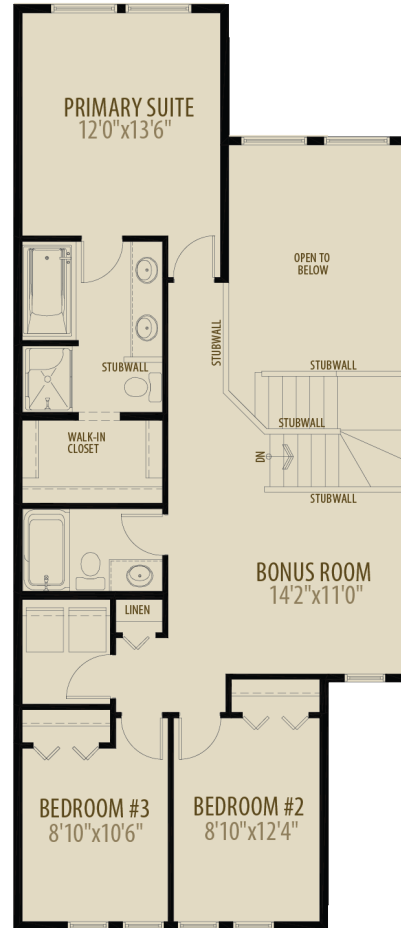
# THE WEBSTER B

1,859 SQ FT | 3 BEDROOM 2.5 BATH

MODEL OPTIONS: #3 - SIDE ENTRY, #4 - OPEN TO BELOW WITH BONUS ROOM,  
#5 - MAIN FLOOR DEN



Main Floor 852 sq ft



Upper Floor 1,007 sq ft

NOW AVAILABLE  
\$660,191



# 107 ROYAL STREET

SUMMER 2024 POSSESSION



## MODEL HOME FEATURES INCLUDE:

- Ceiling Height Kitchen Cabinets
- 18ft Living Room Ceiling Height
- Modern Luxury Floor to Ceiling Fireplace
- 9 ft Main Floor and Basement Height
- Custom Walk in Closet Organizer
- Main Floor Den
- South Facing Back Yard

## CONTACT

**AREA MANAGER**

Michelle Neuville

825 606 0836

[riverside@morrisonhomes.ca](mailto:riverside@morrisonhomes.ca)