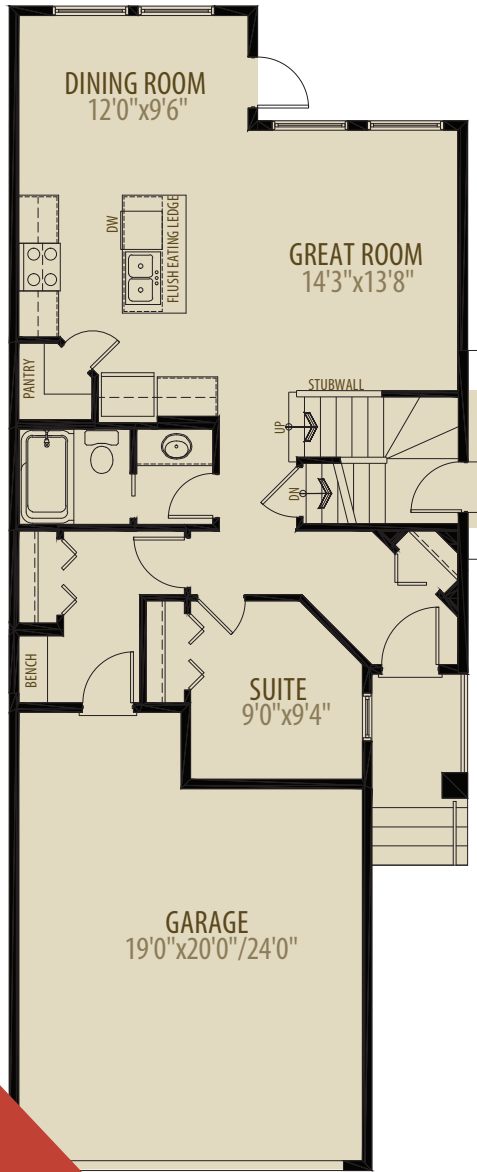


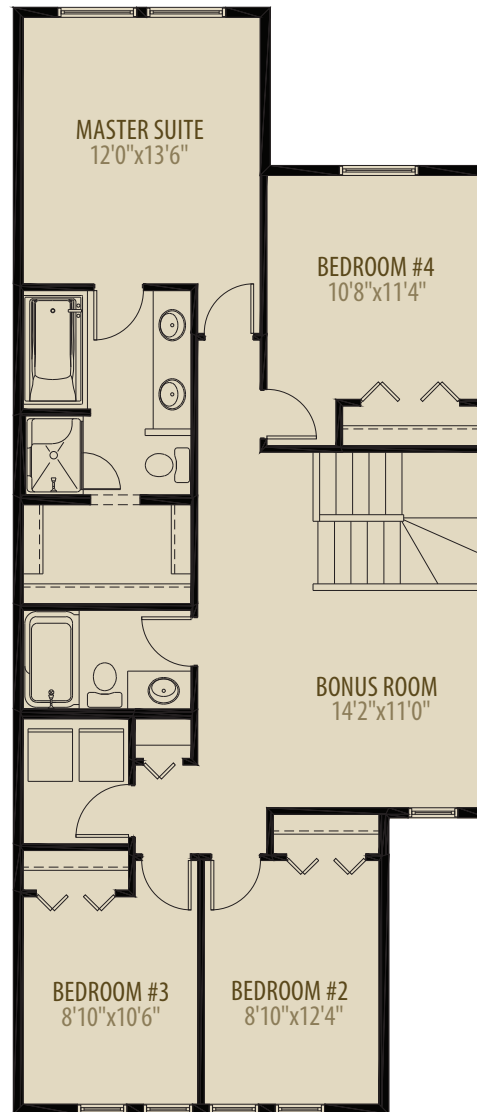
THE WEXFORD

2,033 SQ FT | 5 BEDROOM 3 BATH

MODEL OPTIONS: #3 - SIDE ENTRY, #6 - MAIN FLOOR SUITE & #8 - 4TH BEDROOM AND BONUS ROOM



Main Floor 852 sq ft



Upper Floor 1,181 sq ft

NOW AVAILABLE
\$609,000.00



16908 49 ST NW

POSSESSION: FALL 2023



MODEL HOME FEATURES INCLUDE:

- Electric fireplace
- Chimney hood fan
- Stainless steel appliances
- Built in microwave
- Simplified legal suite rough in
- 9ft basement foundation height
- Quartz countertops in the kitchen & the bathrooms
- Tiles shower in the ensuite
- LVP main floor flooring Railings on stairs
- Pot lights & Pendant lights
- Electric fireplace



CONTACT

AREA MANAGER

Sudip Punaria

587 802 4229

cybecker@morrisonhomes.ca