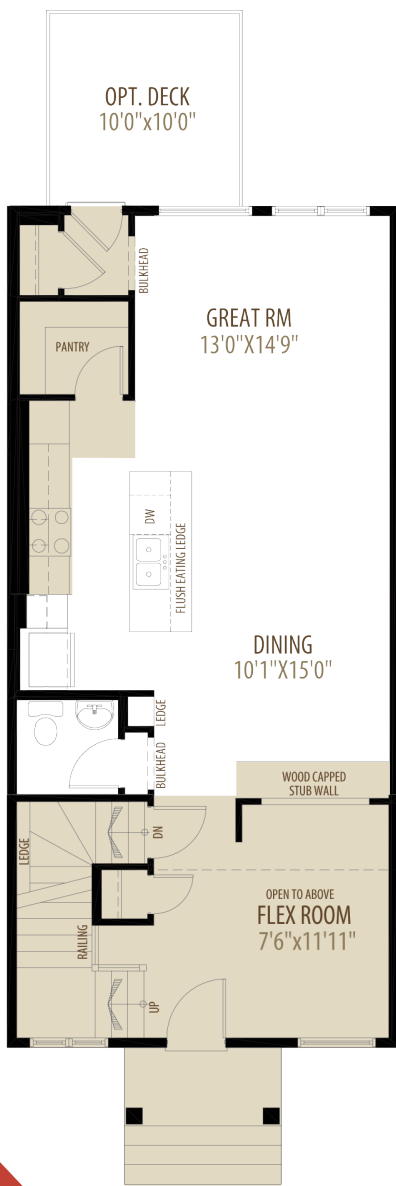


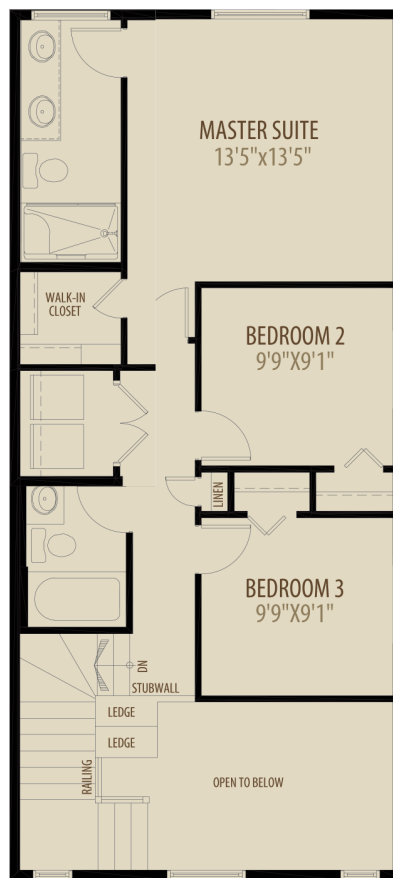
THE BROOKLYN B

1,620 SQ FT | 3 BEDROOM 2.5 BATH

MODEL OPTIONS: #2 - OPTIONAL PANTRY, #6 - SHOWER, #8 - OPEN TO BELOW



Main Floor 860 sq ft



Upper Floor 760 sq ft

NOW AVAILABLE
\$602,945.00



Proud to be named Calgary's Builder of the Year for 15 years.
2001, 2002, 2003, 2004, 2005, 2006, 2007, 2008, 2009, 2010, 2013, 2014, 2018, 2020, 2021



26 EDITH MANOR NW

POSSESSION: SPRING 2023



MODEL HOME FEATURES INCLUDE:

- Walk out basement lot
- Quartz counter tops throughout
- Upgraded stainless steel kitchen appliances including gas range, chimney hood fan and built in microwave
- Washer and dryer included in the upper floor laundry room
- Electric fireplace
- 20'x22' concrete parking pad
- 10'x10' all weather wood deck with barbecue gas line



CONTACT

AREA MANAGER

Sarah Dredge
825 509 1661

glacerridgelaned@morrisonhomes.ca

Price subject to change. Elevation and colours may not be as shown.
Please see Area Manager for details.



GLACIER RIDGE

MorrisonHomes.ca