

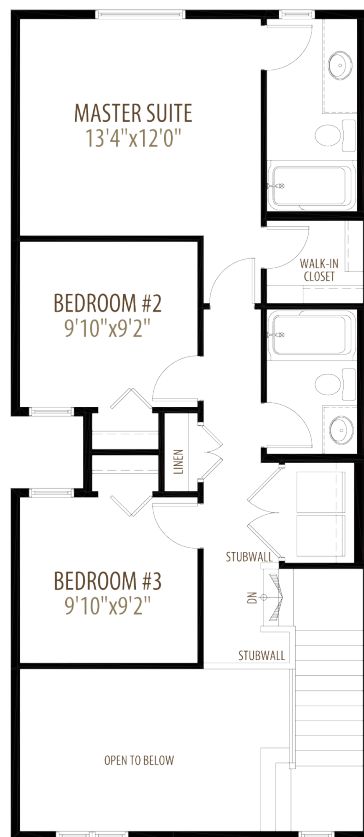
THE ARISTA II H

1,690 SQ FT | 3 BEDROOM 2.5 BATH

MODEL OPTIONS: #6 - REAR KITCHEN LAYOUT



Main Floor 935 sq ft



Upper Floor 755 sq ft

NOW AVAILABLE
\$622,983.00



Proud to be named Calgary's Builder of the Year for 15 years.
2001, 2002, 2003, 2004, 2005, 2006, 2007, 2008, 2009, 2010, 2013, 2014, 2018, 2020, 2021



28 EDITH TERRACE NW

POSSESSION: SPRING 2023



MODEL HOME FEATURES INCLUDE:

- Walk out basement lot
- Quartz counter tops throughout
- Upgraded stainless steel kitchen appliances including gas range, chimney hood fan and built in microwave
- Upgraded black plumbing hardware
- Tiled shower in the ensuite
- Washer and dryer included in the upper floor laundry room
- Electric fireplace
- 20'x22' concrete parking pad
- 10'x10' all weather wood deck with barbecue gas line



CONTACT

AREA MANAGER

Sarah Dredge
825 509 1661

glacerridgelaned@morrisonhomes.ca

Price subject to change. Elevation and colours may not be as shown.
Please see Area Manager for details.



GLACIER RIDGE

MorrisonHomes.ca