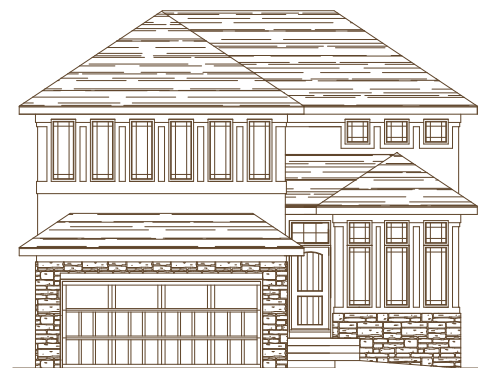




ELEVATION A 2,767 sq ft



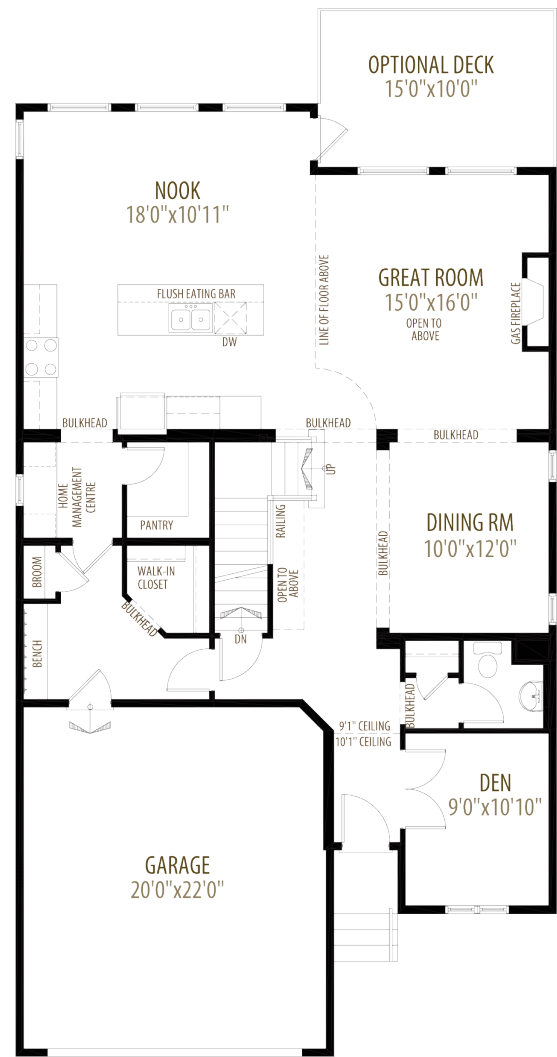
ELEVATION B 2,763 sq ft



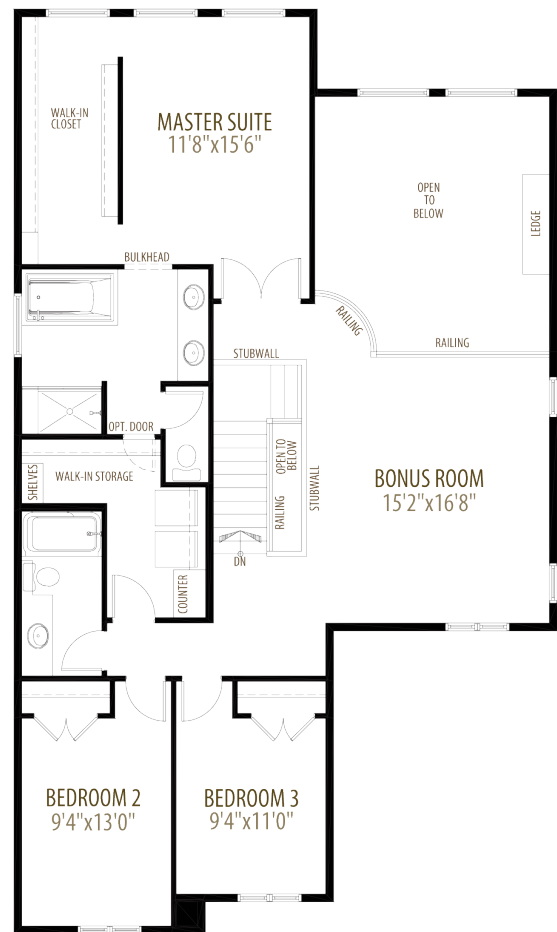
The Logan II 2,767 sq ft 3 BEDROOM 2.5 BATH

All illustrations are the artist's conception. Window sizes, location and other modifications may occur depending on front elevation. The above elevation may not be available in all communities. Contact your Area Manager for approved elevations.

# The Logan II 2,767 sq ft 34W 60D



Main Floor 1,405 sq ft

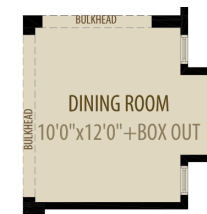


Upper Floor 1,362 sq ft

NOTE: Plans based on Elevation 'A'. Alternate elevations or floorplan options may be available. See showhome for more information. This plan is published by Morrison Homes. All features and inclusions are specification dependent. See your Area Manager for details. In order to improve product design, specifications and dimensions may be subject to change without notice. All rights reserved, including the rights to reproduction in whole or in part, in any form, without the permission of the publisher.

## Model Features Include:

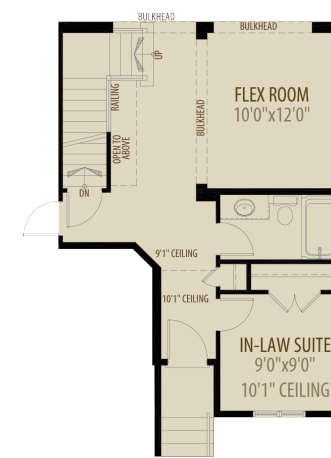
- L-shaped kitchen opens to the nook, great room with fireplace and dining room allowing for the perfect entertaining space.
- Upper floor features a spacious central bonus room, two secondary bedrooms, laundry room, while the rear master suite features a deluxe 4-piece ensuite, large walk-in closet and leads into an additional storage closet.
- Options include adding a fourth bedroom and a curved staircase.



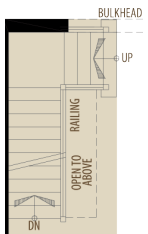
Option 1 Dining Room Cantilever (Adds 13 sq ft)



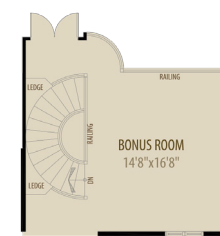
Option 2 Enclosed Flex Room



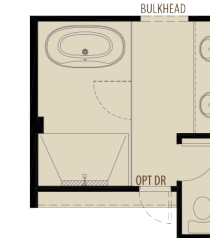
Option 3 In-Law Suite



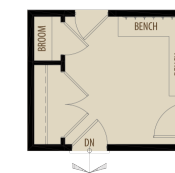
Option 4 Stairwell Opening



Option 5 Curved Staircase



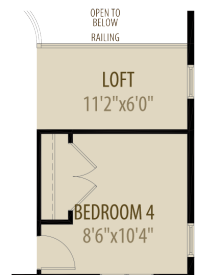
Option 6 Revised Ensuite



Option 9 Revised Mudroom



Option 7 Revised Walk-in Closet



Option 8 4th Bedroom



Proud to be named Calgary's Builder of the Year for 13 years. 2001, 2002, 2003, 2004, 2005, 2006, 2007, 2008, 2009, 2010, 2013, 2014, 2018

